

About the Contributors



Madeline Blanco de Armas PhD

Biochemist. Dr Blanco is a senior researcher at the Molecular Biology Laboratory in Cuba's AIDS Research Laboratory, Havana.



Lisa Long

Counselor and medical assistant. Ms Long is a research assistant in the Department of Political Science, University of New Mexico, and a refugee mentor with Lutheran Family Services, Albuquerque, New Mexico, USA.



Abel Cruz Rodríguez MS MPH

Epidemiologist and bioethicist. A health promoter and educator at Ranchuelo Municipal Hygiene and Epidemiology Center in Villa Clara Province, Cuba, Mr Cruz is also associate professor of public health and epidemiology at the Medical University of Villa Clara.



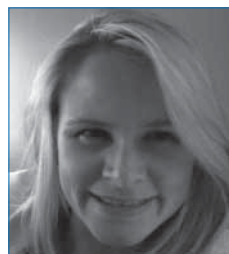
Alexander N. Ortega PhD

Social scientist. Professor and chair of the Department of Health Management and Policy and director of the Center for Population Health and Community Impact at Drexel University School of Public Health, Philadelphia, Pennsylvania, USA. Dr. Ortega is a recipient of multiple research awards including the Distinguished Nationally-Known Health Professional Award by the Latino Caucus of the American Public Health Association.



Dabney P. Evans PhD MPH

Mixed-methods researcher. Dr Evans is assistant professor of global health at Emory University, Atlanta, Georgia, USA. Her research addresses public health and human rights issues affecting vulnerable populations.



Lauren Sastre MS

Doctoral candidate in the Department of Nutrition, University of North Carolina at Greensboro, USA. Ms. Sastre's research interests include qualitative methodology, the role of culture and perception on health-related behaviors, and development of targeted resources and interventions for underserved, diverse populations.



Nadezhda González García MD MS

Dual specialist in family medicine and microbiology, with a master's degree in virology. Dr González's research at Havana's Finlay Institute centers on clinical trials, most recently of the heptavalent conjugate antipneumococcal vaccine, subject of her article in this issue.



Wendy Valdés Gómez MD

Family physician. Dr Valdés practices and teaches at the 14 de Junio Polyclinic in Havana, where she researches early signs of atherogenesis in children and adolescents and is responsible for the comprehensive diabetic care program.



Lauren Haldeman MS PhD

Associate professor, Department of Nutrition, University of North Carolina at Greensboro, USA. Dr Haldeman's research in low-income and minority groups includes design of theory-based nutrition interventions, family approaches for preventing diet-related chronic diseases and issues of food access and dietary quality.



Ernesto Vilches Izquierdo MD MS

Internist. Dr Vilches is clinical director of the Cuando Cubango Medical and Pharmacy Clinic, Menongue, Angola. He is vice president of Cuba's Sudden Death Research Group and recipient of a 2012 Cuban Academy of Sciences Award.



Carmen Landau MD

Family physician. Dr Landau graduated from Cuba's Latin American Medical School before completing her residency at the University of New Mexico's Department of Family and Community Medicine, USA. She is now a staff physician at Southwestern Women's Options, Albuquerque, New Mexico. Her professional interests focus on reproductive and women's health.